

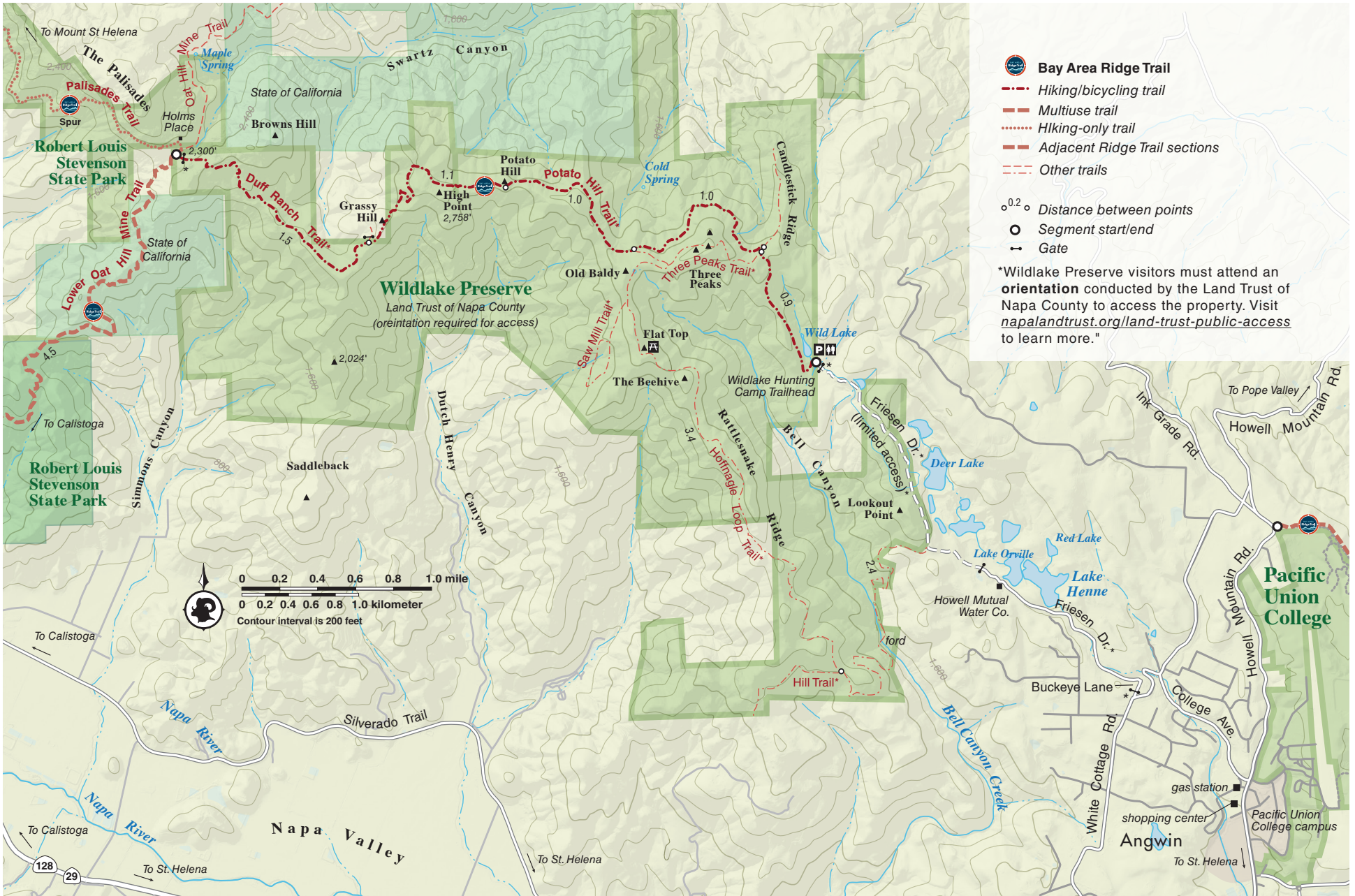


Wildlake Preserve

Napa County

From: Robert Louis Stevenson State Park

To: Friesen Drive



Wildlake Preserve

Napa County

From: Robert Louis Stevenson State Park

To: Friesen Drive

Length: 5.8 miles one-way

Elevation Gain: 997 feet one-way

Accessibility: Hikers and mountain bikers

This preserve encompasses visually stunning rocky outcrops, pine and Douglas fir forests, oak woodland, and chaparral across four miles of ridgeline in northern Napa Valley. Public access at the Wildlake Preserve includes hiking and mountain biking activities; equestrian use and dogs are not permitted. Access to the Wildlake Preserve is typically from the Wildlake Hunting Camp Trailhead on the eastern boundary and requires driving on narrow, private roads with automatic gates, then through locked gates.

Since this trail crosses an ecologically-sensitive preserve, visitors need to attend an orientation conducted by the Land Trust of Napa County to access the property. Visit napalandtrust.org/land-trust-public-access to learn more.

For details on more Ridge Trail segments, trailheads and more buy the book from Wilderness Press: <https://advkeen.co/BayAreaRidgeTrail>.

For more resources to plan your trip, visit our Trip Planning Tools page: <https://ridgetrail.org/trip-planning-tools/>

 @BayAreaRidgeTrail

 @RidgeTrail