

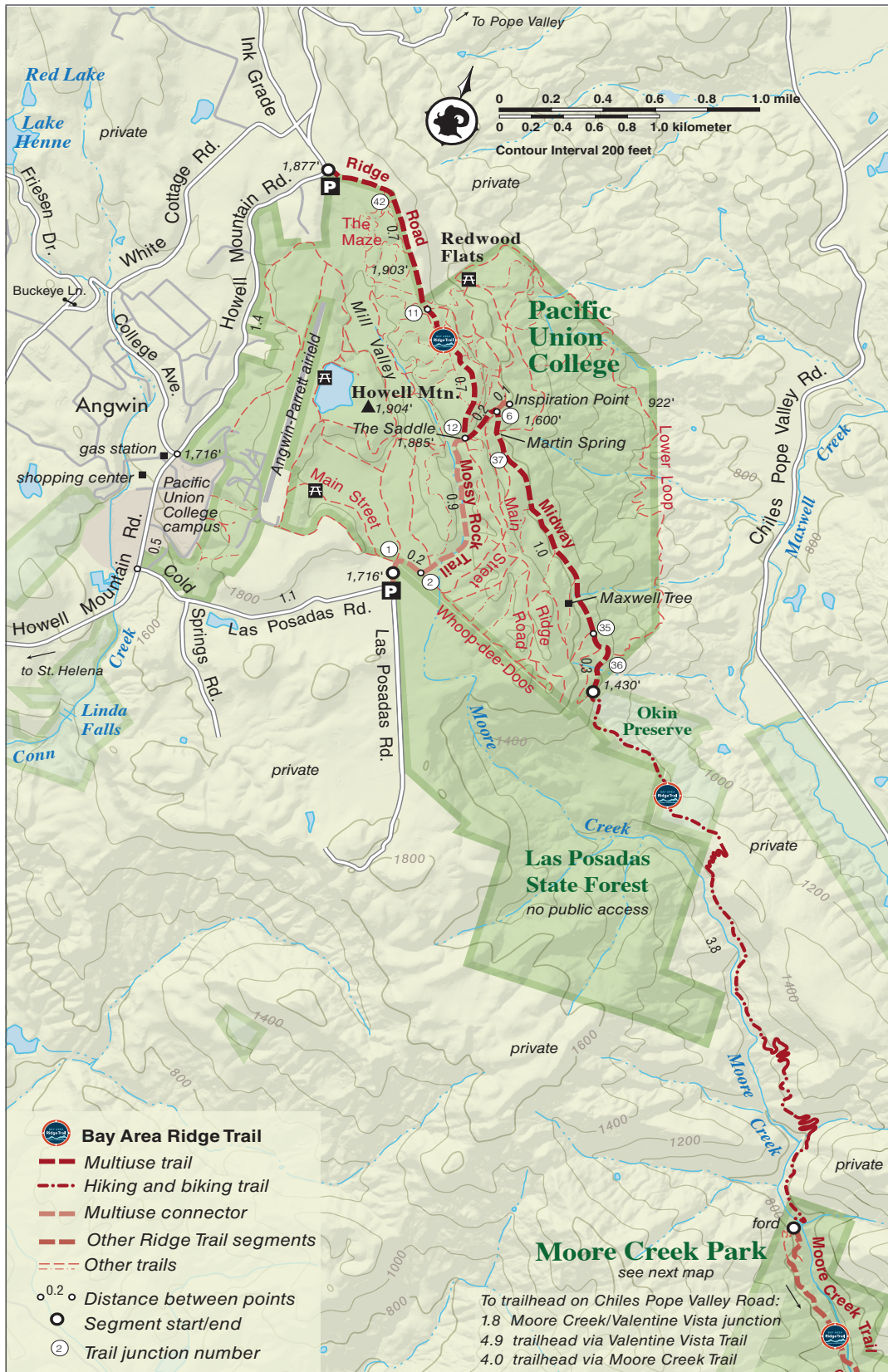


# Pacific Union College to Moore Creek Park

Napa County

From: Howell Mountain Rd

To: Moore Creek Park



## Pacific Union College to Moore Creek Park

Napa County

**From:** Howell Mountain Rd

**To:** Moore Creek Park

**Length:** 6.8 miles one-way

**Elevation Gain:** about 510 feet one-way

**Accessibility:** Hikers and mountain bikers

This segment of the Ridge Trail traverses Pacific Union College land and the Okin Preserve en route to Moore Creek Park. With this section of Ridge Trail (added in 2023) hikers and bikers can travel nearly all the way to Lake Hennessey through varied terrain on fun, flowy trails. Pacific Union College is open to hiking, biking, and equestrian use. Okin Preserve to Moore Creek Park is closed to e-bikes and horses.

For details on more Ridge Trail segments, trailheads and more buy the book from Wilderness Press: <https://advkeen.co/BayAreaRidgeTrail>.

For more resources to plan your trip, visit our Trip Planning Tools page: <https://ridgetrail.org/trip-planning-tools/>

