

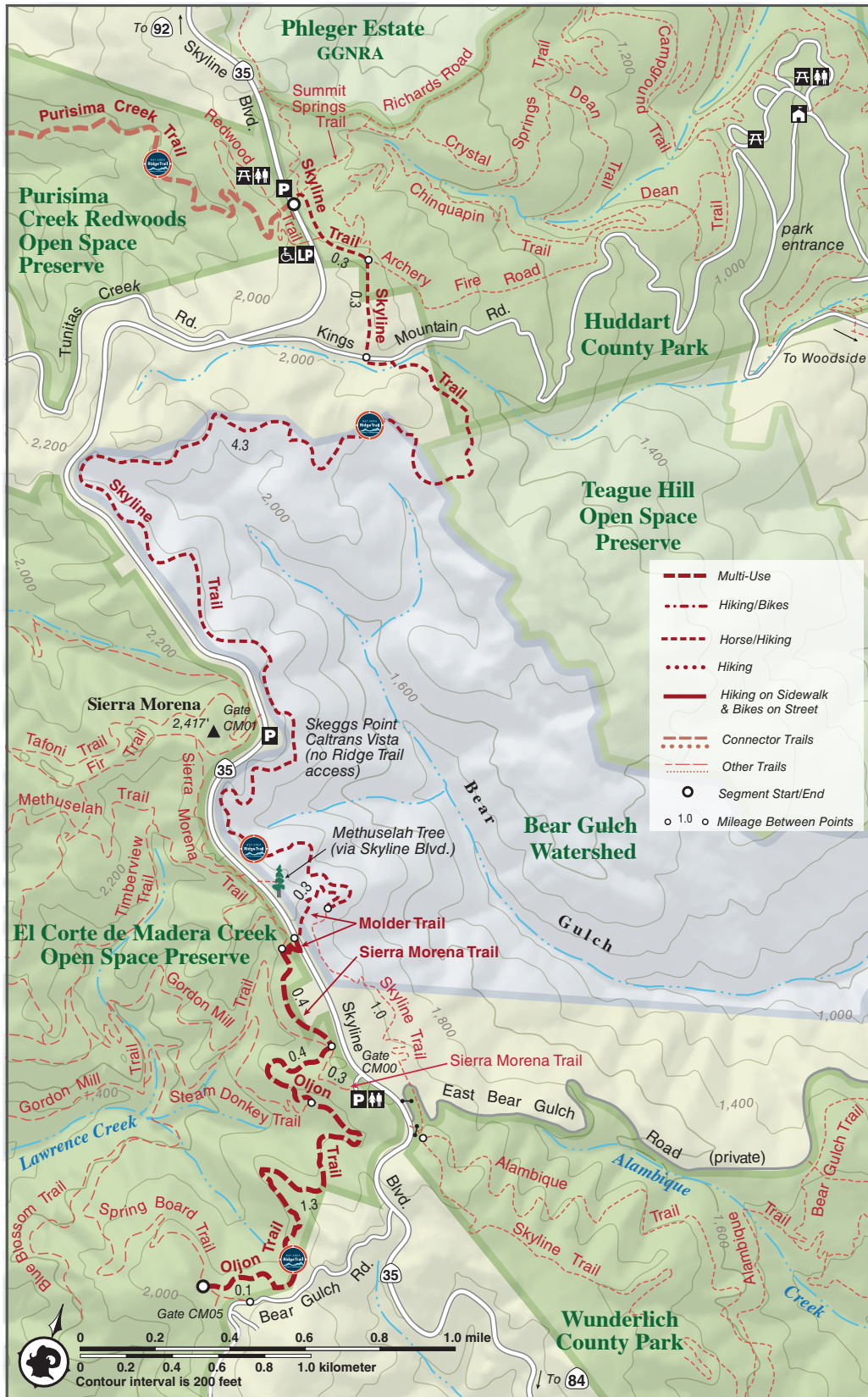


# El Corte de Madera Creek Preserve to Huddart County Park

San Mateo County

From: Oljon Trail off Bear Gulch Road

To: Purisima Creek Trailhead in Woodside



Post your photos @bayarearidgetrail and see them on our website. #bayarearidgetrail

## El Corte de Madera Creek Preserve to Huddart County Park

**From:** Oljon Trail off Bear Gulch Road

**To:** Purisima Creek Trailhead in Woodside

**Length:** 7.4 miles one-way; car shuttle possible.

**Elevation Gain/Loss:** 715 feet/845 feet one-way - *Elevation does not include El Corte de Madera*

**Accessibility:** Hikers and equestrians, Oljon and Sierra Morena Trails open to bicyclists

Follow the gently winding Oljon Trail through redwood and mixed evergreen forests to the Skyline Trail below the crest of the Santa Cruz Mountains.

Follow the gently winding Oljon Trail through redwood and mixed evergreen forests to the Skyline Trail below the crest of the Santa Cruz Mountains. El Corte de Madera Creek Preserve has something for everyone, with fun curves and berms for mountain bikers, mushrooms and ferns for naturalists, and shade and gentle grades for families. Discover unusual spring wildflowers along the Skyline Trail, one of the few remaining segments of the old California Riding and Hiking Trail established in 1954. Visit this easy, shaded trail on a summer day when you need a retreat from the valley heat.

This trail description is excerpted from the 2019 Guidebook. For details on all trails, trailheads and more [buy the book](#) from Wilderness Press.

For more resources to plan your trip, visit our [Trail Tools](#) page.

LINK to buy book: <https://advkeen.co/BayAreaRidgeTrail>

LINK to Trail Tools: <https://ridgetrail.org/trail-tools/>