

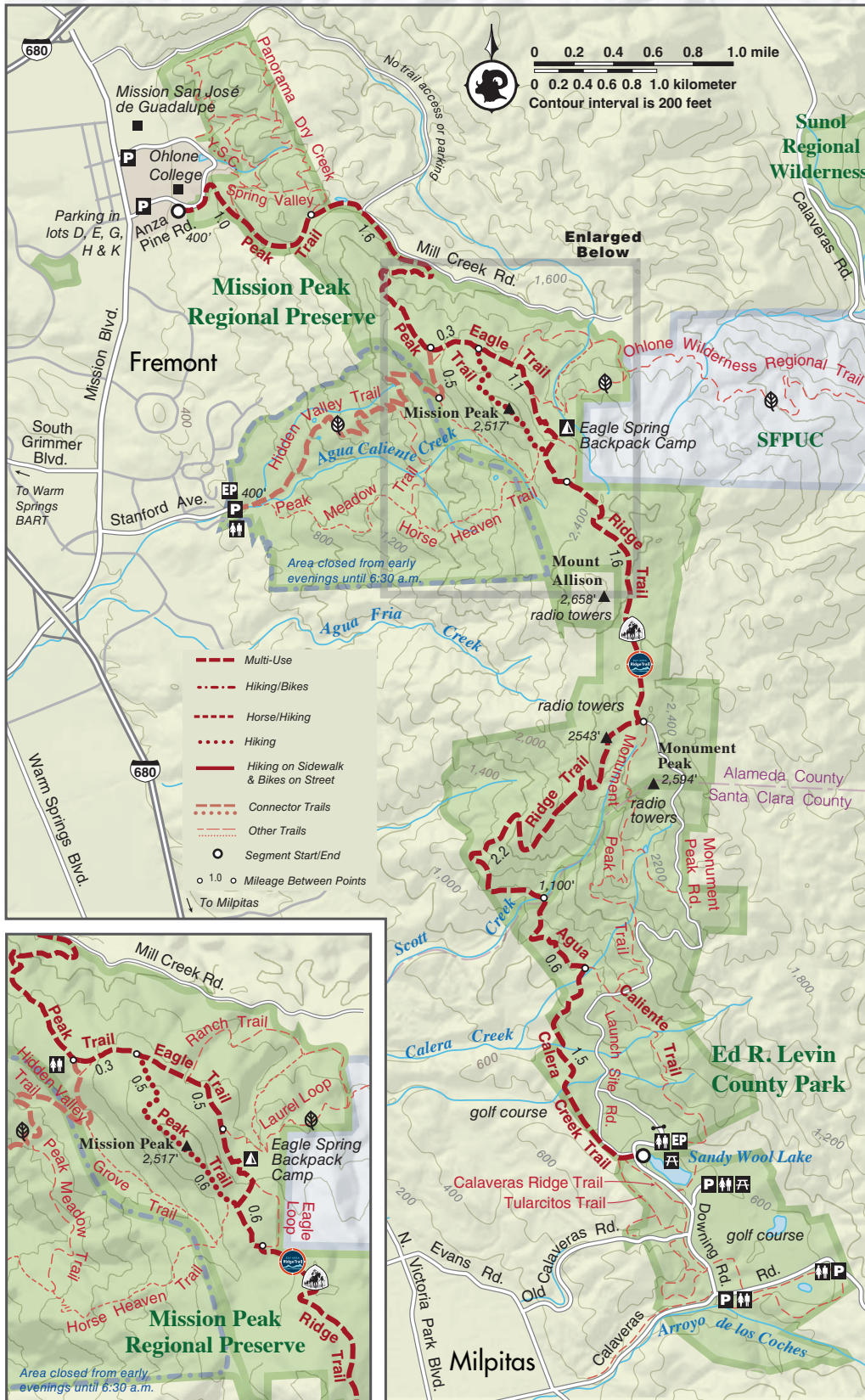


Mission Peak Regional Preserve and Ed R. Levin County Park

East Bay

From: Ohlone College in Fremont

To: Sandy Wool Lake in Milpitas



Post your photos @bayarearidgetrail and see them on our website. #bayarearidgetrail

Mission Peak Regional Preserve and Ed R. Levin County Park

From: Ohlone College in Fremont

To: Sandy Wool Lake in Milpitas

Length: 9.9 miles one-way; car shuttle possible.

Elevation Gain/Loss: 2,190 feet/2,030 feet one-way

Accessibility: Hikers, equestrians, and mountain bikers

Climb through high grasslands past three lofty peaks that top a rugged ridgeline. You have views of rippling hills, tree-filled canyons, and bayshore marshlands from these exposed and often windy trails. You encounter some very steep segments in the final 4-mile descent to a pretty lake in a quiet valley. The side trip to Mission Peak's summit is on a narrow, steep, and rocky trail; expect to see many people on their way to and from Mission Peak. Get an early start to do the climb before the day warms.

This trail description is excerpted from the 2019 Guidebook. For details on all trails, trailheads and more [buy the book](#) from Wilderness Press.

For more resources to plan your trip, visit our [Trail Tools](#) page.

LINK to buy book: <https://advkeen.co/BayAreaRidgeTrail>

LINK to Trail Tools: <https://ridgetrail.org/trail-tools/>

Post your photos [@bayarearidgetrail](#) and see them on our website. [#bayarearidgetrail](#)