



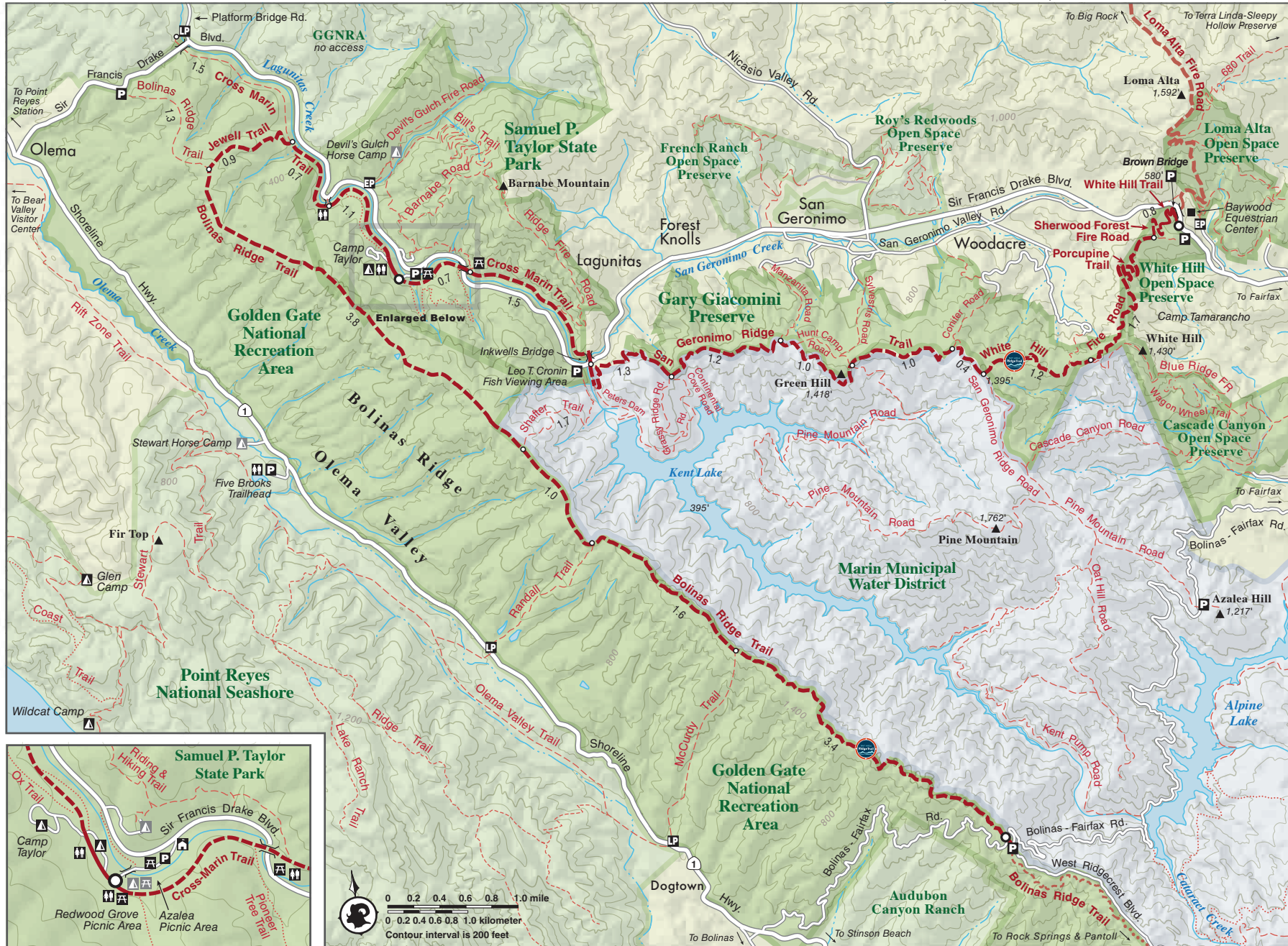
Samuel P. Taylor State Park to White Hill Open Space Preserve

Marin County

From: State Park Entrance in Lagunitas

To: Brown Bridge in Fairfax

This trail has been proudly adopted by A Fork Full of Earth.



Samuel P. Taylor State Park to White Hill Open Space Preserve

Marin County

From: State Park Entrance in Lagunitas

To: Brown Bridge in Fairfax

Length: 10.8 miles one-way; car shuttle possible.

Elevation Gain/Loss: 1,540 feet/1,265 feet one-way

Access: Hiking, mountain biking, horseback riding

This segment starts in the valley on the old railroad trail then climbs to San Geronimo Ridge. The ridge fire road is long and undulating, with rewarding 360-degree views of the North Bay, and deep canyons and wooded ridges crowned by Mount Tamalpais. The route feels remote and has a dramatic view down to scenic Kent Lake. After reaching its highest elevations in a unique Sargent cypress forest, the trail descends through White Hill Open Space Preserve, offering more beautiful views.

Find more details about this trail segment in the official Bay Area Ridge Trail guidebook. You can buy the book from Wilderness Press at <https://advkeen.co/BayAreaRidgeTrail>.

For more resources to plan your trip, visit our Trip Planning Tools page: <https://ridgetrail.org/trip-planning-tools/>

 @BayAreaRidgeTrail

 @RidgeTrail