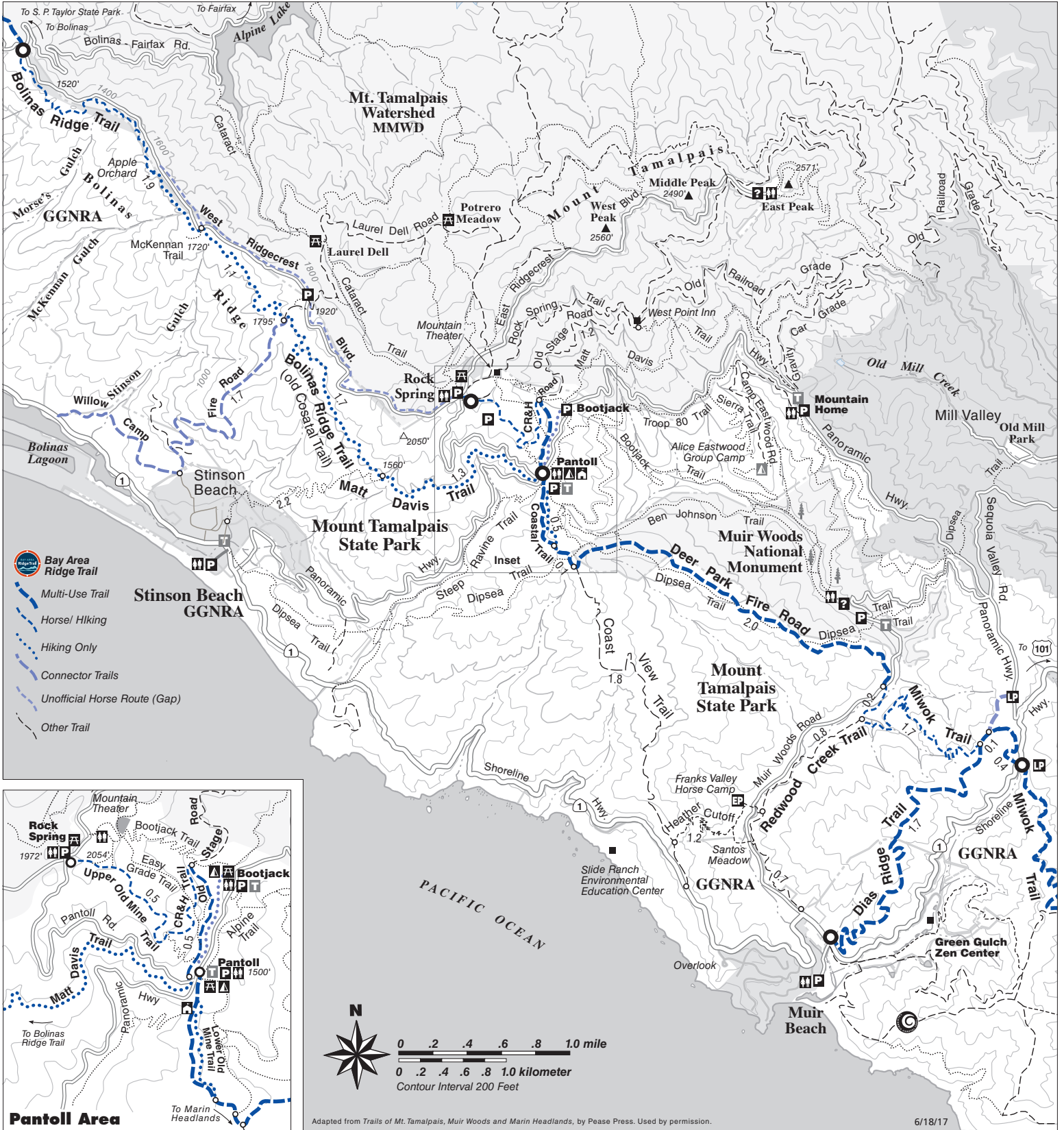




Mount Tamalpais
Pan Toll to Bolinas-Fairfax Road
 Marin County



Post your photos on instagram [@BayAreaRidgeTrail](#) and see them on our website. [#ontheridgetrail](#)

Distance: 6.4 miles

From: Pantoll Ranger Station

To: Bolinas-Fairfax Road

High on the slopes of Mt. Tamalpais and along Bolinas Ridge, this route takes full advantage of the mountain's challenging trails, breathtaking views, forested glades, and flowery slopes. Coastal fog often obscures vistas in the morning and late afternoon. Choose a clear winter or spring day to appreciate views up and down the coast and the wildflowers that bloom along the trail. Hikers gain and lose several hundred feet in elevation.